

DIAPHRAGM PRESSURE GAUGE

Similar Sanitary Process Connection — Welded & Tri-Clamp type

DS170(W) + Ferrule series

APPLICATIONS

Diaphragm pressure gauges are used when medium is corrosive, contaminated, viscous, crystalline or with impurities. **DS170(W) + Ferrule** series is particularly used in chemical and petrochemical industry, mechanical engineering, plants and apparatus construction...etc.



SPECIFICATIONS

▼ **Instruments** All stainless pressure gauges or pressure transmitters

▼ **Process Connection (Tri-Clamp)**

Diaphragm housing material : SUS304 ; SUS316 ; SUS316L

Tri-clamp — 1/2" ; 3/4" ; 1" ;
1-1/2" ; 2" ; 2-1/2"

Other clamp sizes available made-to-order

▼ **Diaphragm Housing**

Diameter : Φ 70 mm (standard)

Material : SUS304 ; SUS316 ; SUS316L

▼ **Diaphragm** SUS316L

▼ **Coating (option)** Teflon ; PFA

▼ **Temperature**

medium +80°C ; ambient 10 to 60°C
for medium 80~400°C or ambient below 10°C
available made-to-order

▼ **Pressure Range**

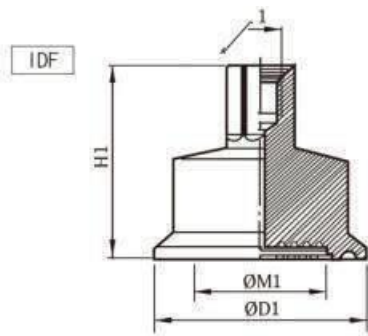
Tri-clamp **1/2"** ; **3/4"** ; **1"** ;
1-1/2" :
0/2.5 ~ 0/40 kg/cm² (bar)

Tri-clamp **2"** :
-760mmHg ~ 40kg/ cm² (bar)

Tri-clamp **2-1/2"** :
-760mmHg ~ 40kg/ cm² (bar)

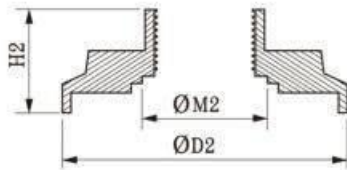
▼ **Accessory**

Clamp ring (ferrule)



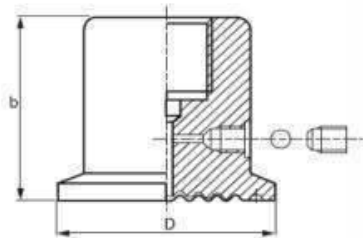
IDF Specification			
Model	size	M1 (Diaphragm)	D1 (O.D.)
IDF	1-1/2"	36mm	50.4mm
	2"	48mm	64mm
Other sizes upon request			

U.S.spec.



U.S. Specification			
Model	size	M2 (Diaphragm)	D2 (O.D.)
US	1-1/2"	38mm	64mm
	2"	50.8mm	77.5mm
Other sizes upon request			

ISO & DIN



DIN Specification			
Model	size	D (O.D.)	b (Height)
DIN	DN25	50.5mm	37mm
	DN32	50.5mm	37mm
	DN40	50.5mm	37mm
	DN50	64mm	45mm
Other sizes upon request			

ISO Specification			
Model	size	D (O.D.)	b (Height)
ISO	1/2"	25.2 mm	
	3/4"	25.2 mm	
	1"	50.5 mm	
	1-1/2"	50.5 mm	37 mm
	2"	64 mm	45 mm
	2-1/2"	77.5 mm	45 mm
Other sizes upon request			

HOW TO ORDER (Please specify additionally the special custom-made specifications or option items)

The model of
Instrument

+ **DS170 (W) + Ferrule**

